



## Channel Coastal Observatory Report to Project Team June 2014

### 1. Wave, tide and met stations

The Isles of Scilly Waverider buoy (St Mary's Sound) was deployed on 15 May 2014 and all real-time data are viewable on the website, including the wave spectra and 1Hz measurements.

Due to the interest in quality-controlled data over the winter season, monthly wave files for Jan, Feb and Mar 2014 have been uploaded to the website.

Summary storm reports for the wave buoys were produced following the storm season, and can be found in the review report at: <http://www.channelcoast.org/reports/>

### 2. Website

Hits to the website increased reached their highest ever during the storms in February 2014, exceeding 1 million per day on 14 Feb. ~70% of hits were to the real-time pages.

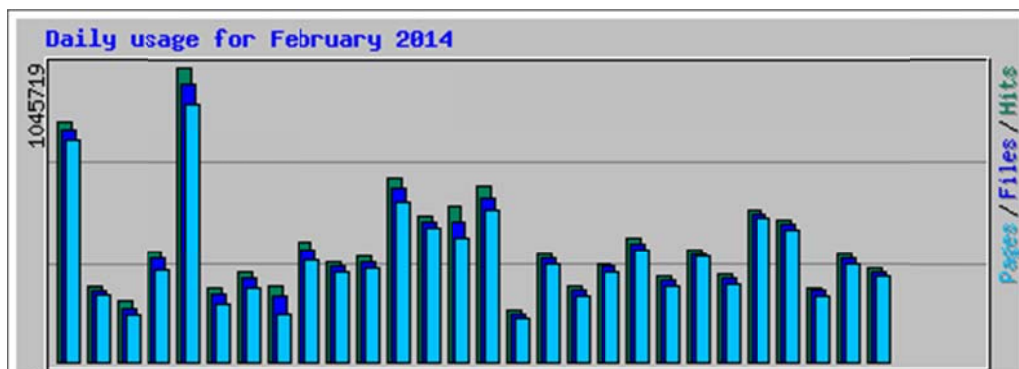


Figure 1: Website hits

Recent minor developments to the website include:

- By default, the Map Viewer switches on only sufficient years to show the latest aerials for all Regions
- Documents on the website's Data Catalogue are now covered by the Open Government Licence
- Metadata rows are automatically expanded to show all information
- Reports up to 150MB can now be uploaded
- Survey-grade metadata for data loaded to the website's Data Catalogue are now sent quarterly to the MEDIN website, thus fulfilling INSPIRE requirements

The quarterly download figures for the Region are shown at Figure 2, to date 31 March 2014.

Southwest Regional Coastal Monitoring Programme  
Website download values

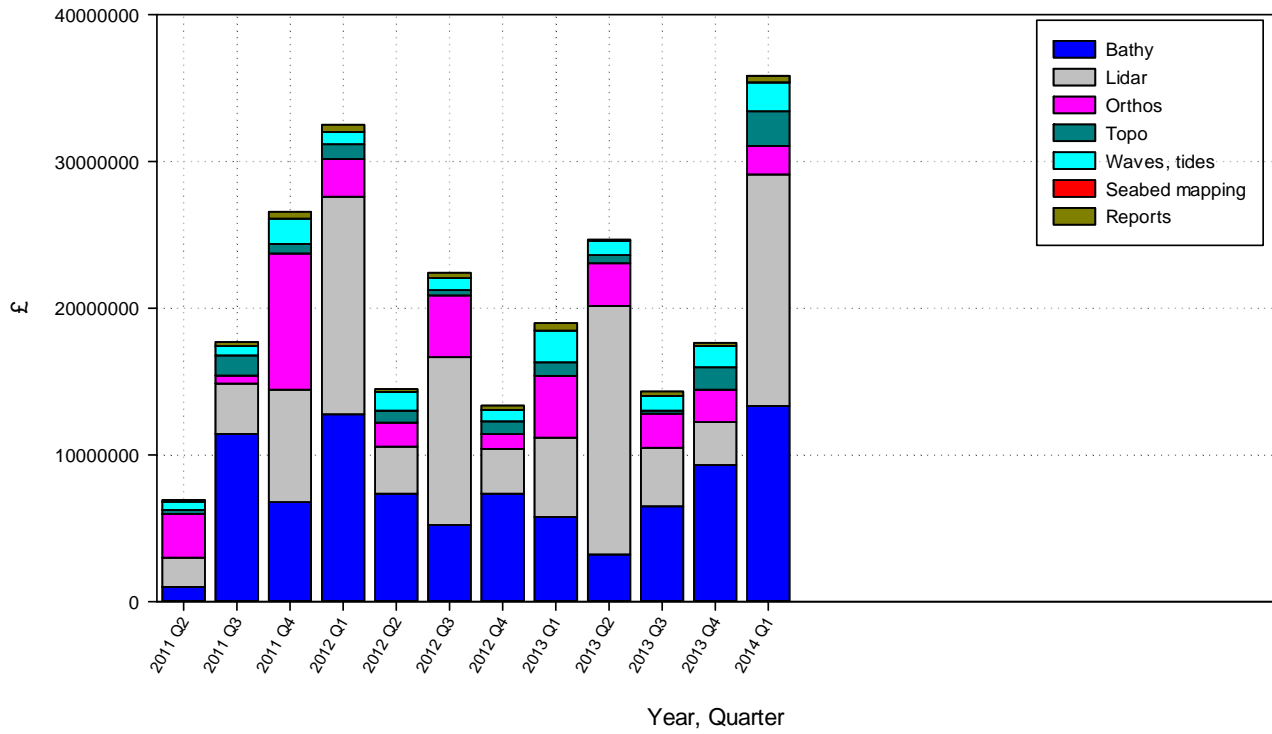


Figure 2: Website download values